

~ WILLIAMS ~

INDIANA JONES PINBALL ADVENTURE

Jackpot Lights Mod – Instructions

Written by: Dave Hofman
Copyright 2020

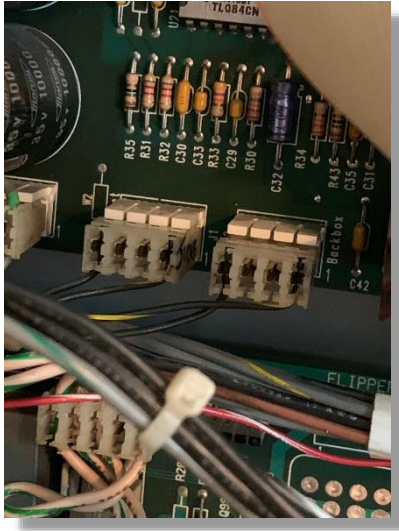




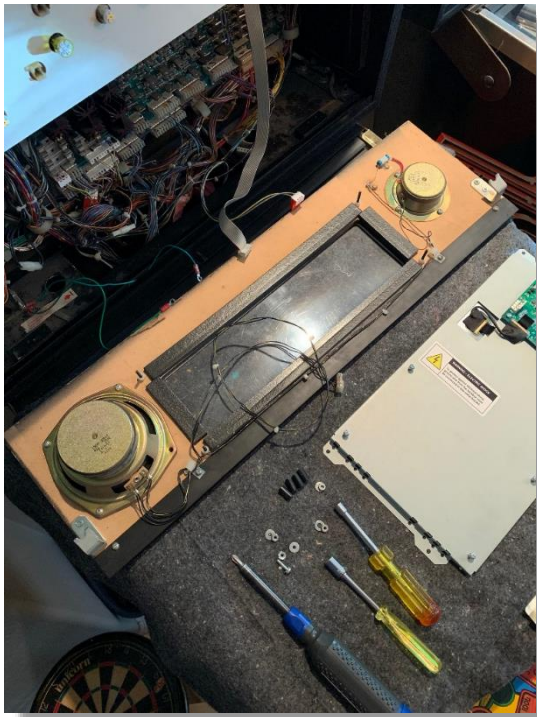
The stock speaker panel awaiting modification to illuminate the three jackpot awards (Ark, Stones and Grail).



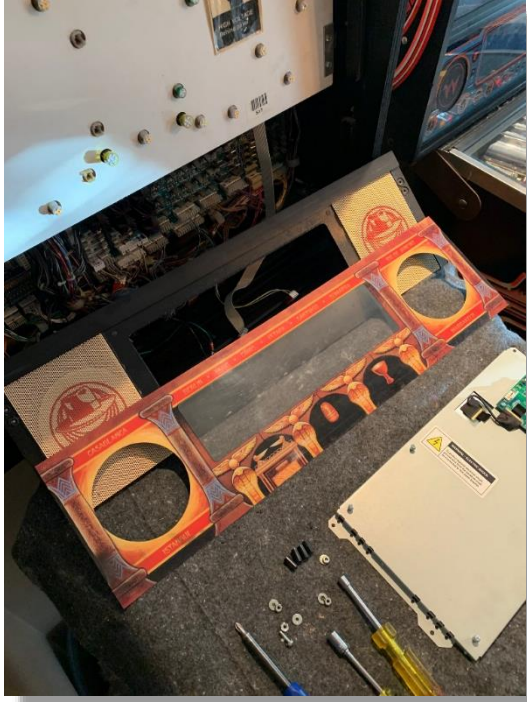
Remove Backglass and place the speaker panel on a protective blanket to avoid scratching glass. There are two grounds, two cables from ColorDMD and an additional cable for sound that need to be removed. The cable for sound is the two strands coming from larger speaker nearest bottom of picture.



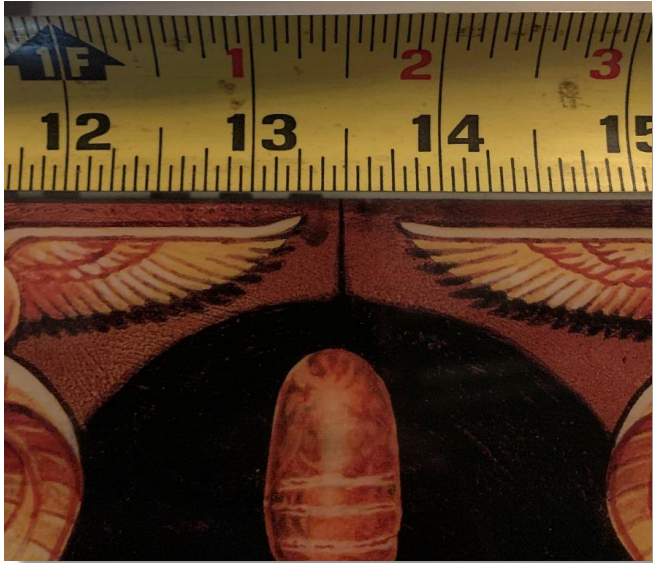
Disconnect J2 connector on sound card. Connector on right.



The ColorDMD is removed by removing the four locknuts, washers and standoffs. Record mounting holes for later re-assembly.



The speaker plastic has a light adhesive. Lift an edge and place your finger to separate the plastic from the wood panel. Be careful not to scratch the backside of the panel.



There is a convenient registration mark directly above the stone award picture. It measures exactly 13.50 inches from the left edge of speaker panel.



Dremel Cut template.pdf

Print out the handy cut overlay guide for use in following steps. PDF format was used to guarantee correct scale was preserved.



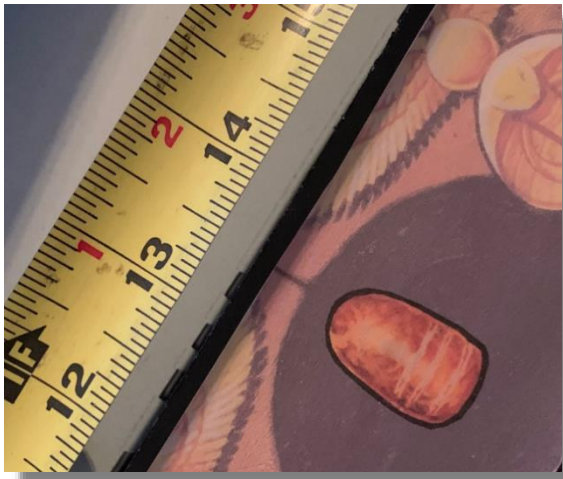
This overlay tool shows the existing background screened back. I offset the picture slightly and provided a black border. This is the edge to be removed.



Just to make sure before using that the overlay matches the existing plastic graphics.



Position the overlay tool by placing the registration point measured at 13.50 inches from the left side of speaker panel as shown.



Align the overlay matching the bottom edge of the overlay with the bottom of wood speaker panel. Then align the overlay registration line at 13.50 inches from the left side.



This picture shows the overlay and the Jackpot Light board from www.revolutionarypinball.com and how the LED's will make this look awesome.



I used a small brush to keep sawdust out of the way. I used the Dremel tip shown in the picture. The flat edge kept the cut edge flat.



Tape the overlay down to prevent movement while cutting. I did cutting over a bucket which perfectly supported the panel and kept mess down to a minimum.



Carefully remove the wood panel as shown. When complete I took a black Sharpie pen and colored the freshly cut surface to improve aesthetics. There are other suppliers that provide the wood cut with three shapes. In my opinion for best look you want the shape to be just slightly larger than graphic. It might take longer but it looks cleaner in my opinion. But then again, I may be more anal than most. After all why else would I go through the hassle to create an instruction document?



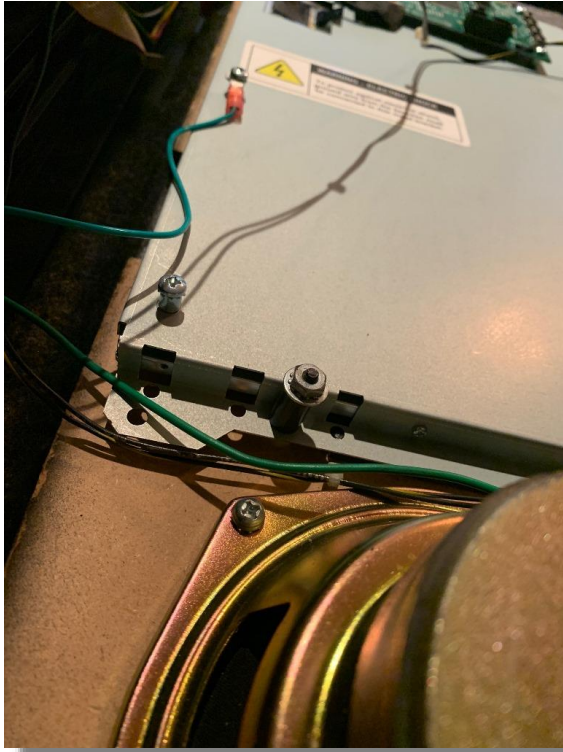
I placed the speaker panel graphics and placed an LED to see the magic illuminated. Oh Yea! Looks awesome!



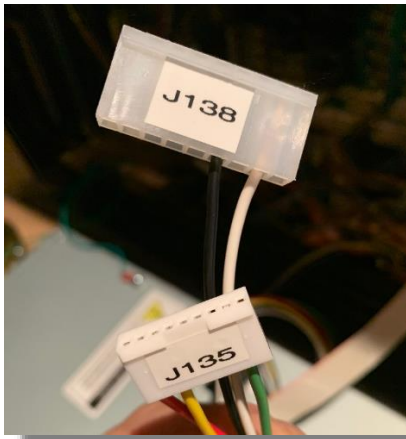
Position the Jackpot light board locating LEDs for best light coverage. Using a fine tip marker I located the three mounting locations on the speaker wood. This is helpful when using the wood screws because it helps stay on target as you secure the light board with the screws.



Secure the Jackpot LED light board with screws. Do not over-tighten.



For ColorDMD installations the included standoffs with Jackpot Light board are not used. The Jackpot LED board is sandwiched between the wood speaker panel and the Color DMD.



The Jackpot LED board comes pre-wired with connectors that are labeled for ease of installation.

J135-1 N/C
 J135-2 Red-Black, lamp row 2, to speaker panel J1-1
 J135-3 N/C
 J135-4 N/C
 J135-5 N/C
 J135-6 N/C
 J135-7 Red-Blue, lamp row 6, to speaker panel, J1-6
 J135-8 N/C
 J135-9 Red-Gray, lamp row 8, to speaker panel, J1-5

 J138-1 Yellow-Red, lamp column 2, to speaker panel J1-3
 J138-2 N/C
 J138-3 N/C
 J138-4 Yellow-Black, lamp column 4, to speaker panel J1-5
 J138-5 N/C
 J138-6 N/C
 J138-7 N/C
 J138-8 N/C
 J138-9 N/C

This is from the Indiana Jones manual where it calls out the use for J135 and J138. Over the years someone may have connected something else to those connectors. They will need to be returned to their correct location if applicable. These two connectors should not be used.

 137 and 138 are redundant, connector can be moved back and forth, same for 133, 134 and 135.



Here is a shot during attract mode. The lights alternate and at times are all on. During gameplay they light up when achieved. This adds another dimension of greatness to the game.

 For re-assembly reverse steps. Remember to reconnect ALL cables and grounds.

 If this guide has proven helpful and you want to show some monetary appreciation, my PayPal is david.hofman@cox.net Thanks!