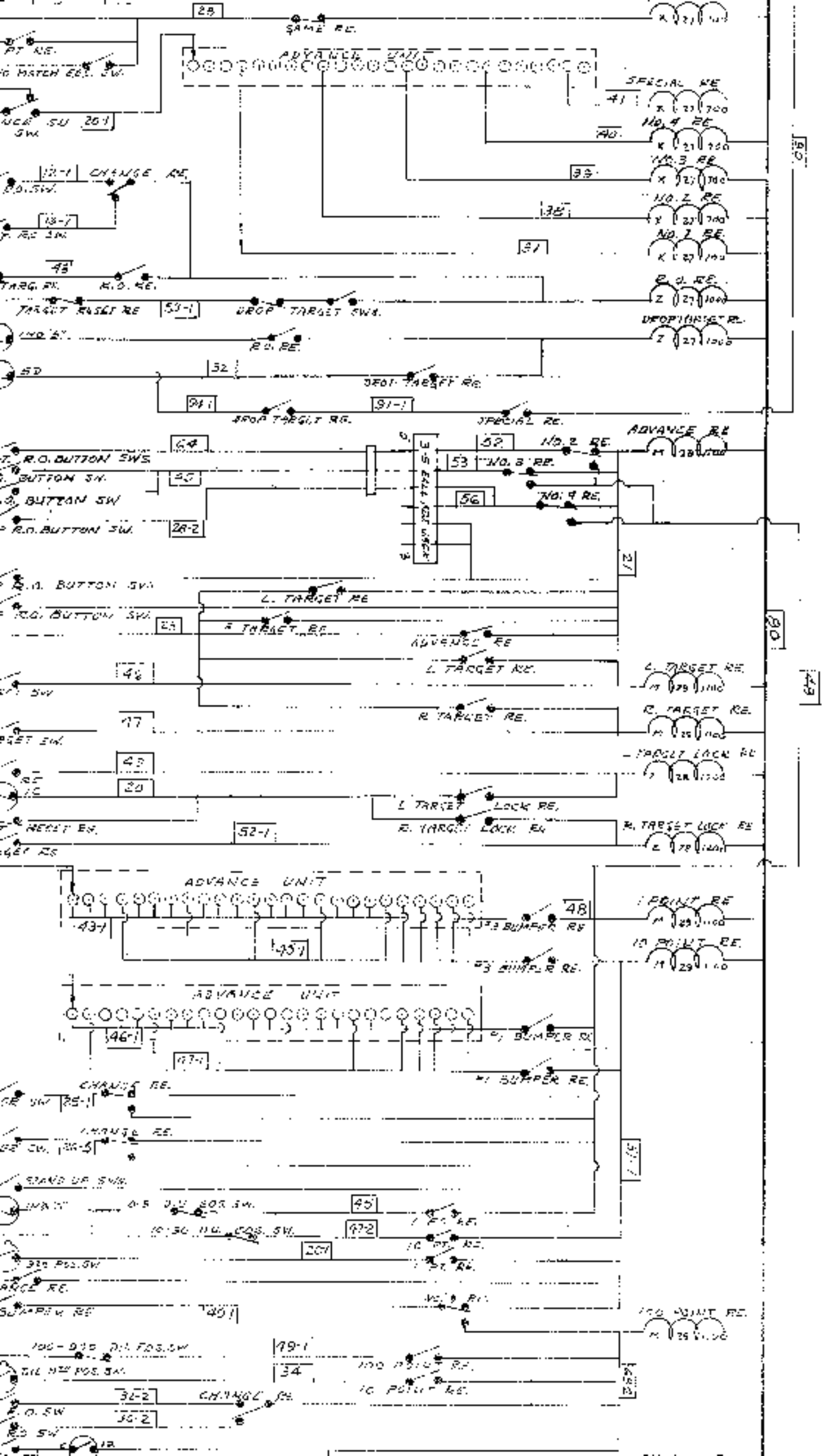
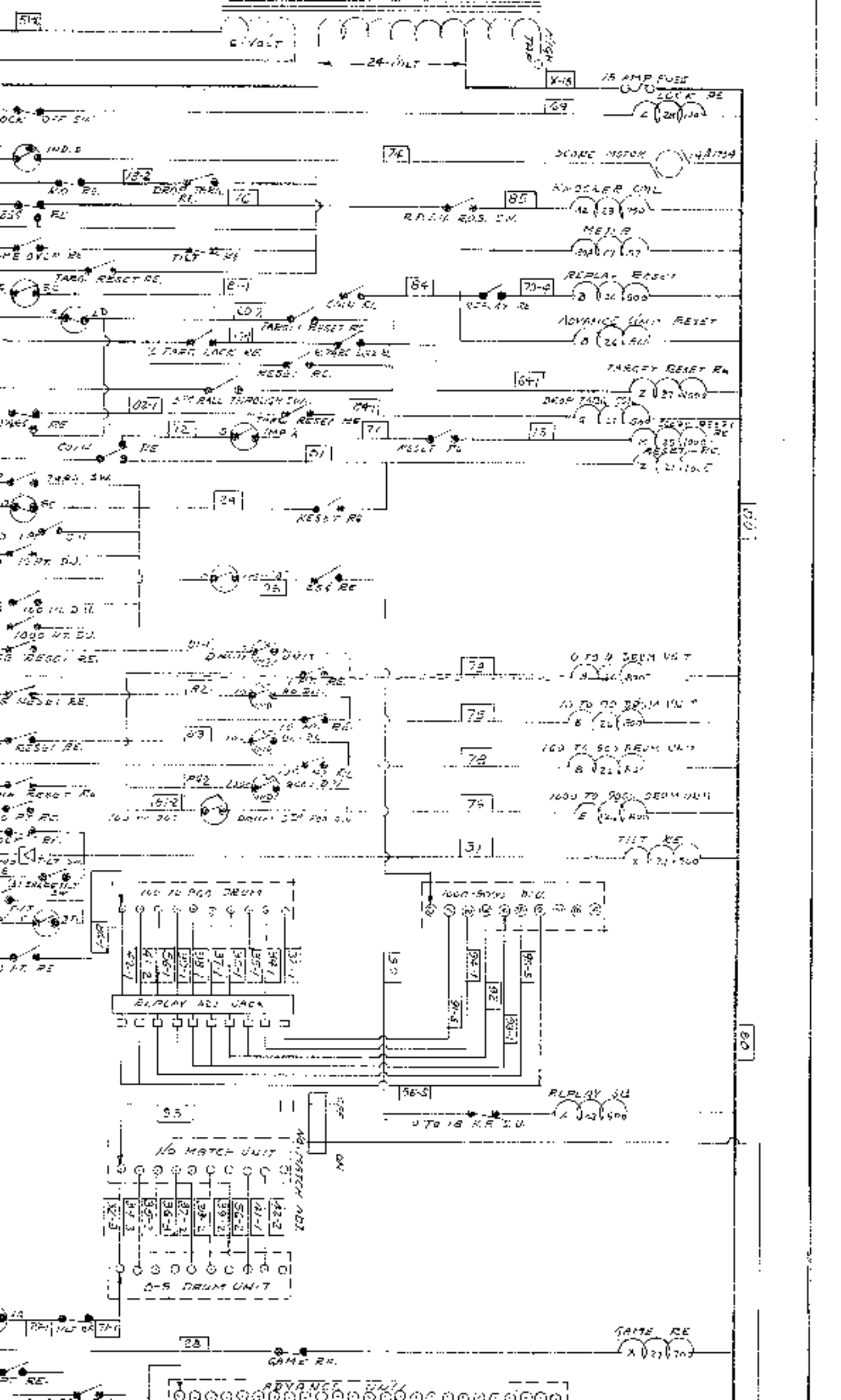
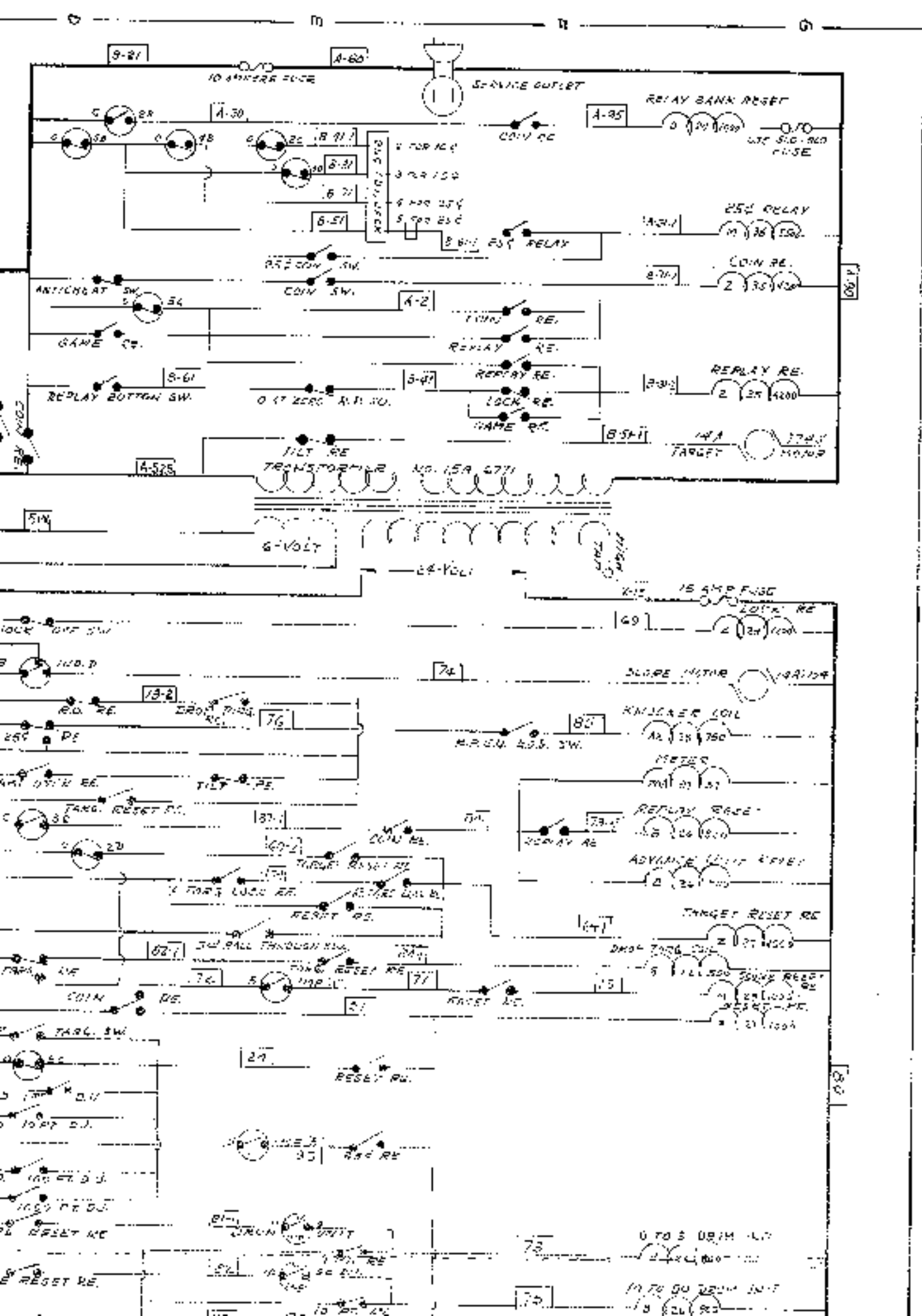


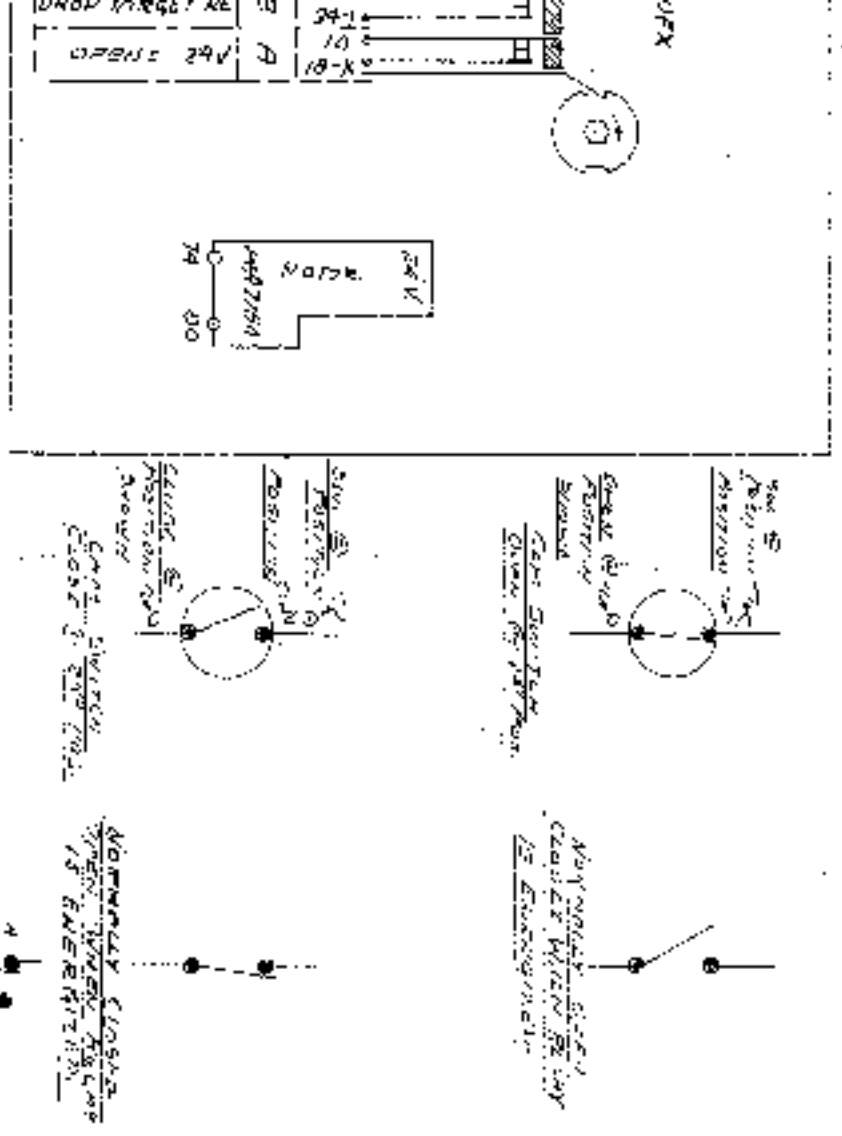
UNIT COIL CONNECTIONS	
RELAY BUMP RESET	G-1
KNOCKER COIL	G-3
MATCH	G-3
REPLY/RESET	G-8
ADVANCE UNIT RESET	G-4
DOWN TRIPPER COIL	G-4
G-S DRAW UNIT	G-5
10-50 NEON UNIT	G-5
100-900 DRAW UNIT	G-5
1000-9000 DRAW UNIT	G-6
REPLY/STEP UP	G-7
NO. MATCH STEP UP	G-5
BALL RELEASE COIL	G-5







To GS
C-4



LONGER, RELAY 935
REMOVED, UNIT 18
PHYSICAL, UNIT 18
UNIDENTIFIED

POLARIS, TABBY
A-B ANOMALY, 2-2-62
A-C, 4-2-62
WHEN RELAY IS ENERGIZED

WIRE	COLOR	CODE
1. RED		4 FIRST NO. DUAL COIL
2. BLUE		RECOIL NO. 22000
3. YELLOW		3. THIRD NO. INDICATOR
4. GREEN		FEED OF 5A/12
5. WHITE		COLOR WINDING
6. BROWN		EXTRACTOR
7. ORANGE		10 = RED
8. PURPLE		15 = BLUE-WHITE
9. GRAY		20 = GREEN
10. VIOLET		21 = GREEN-RED
11. BLACK		22 = GREEN-RED (USED AGAIN)

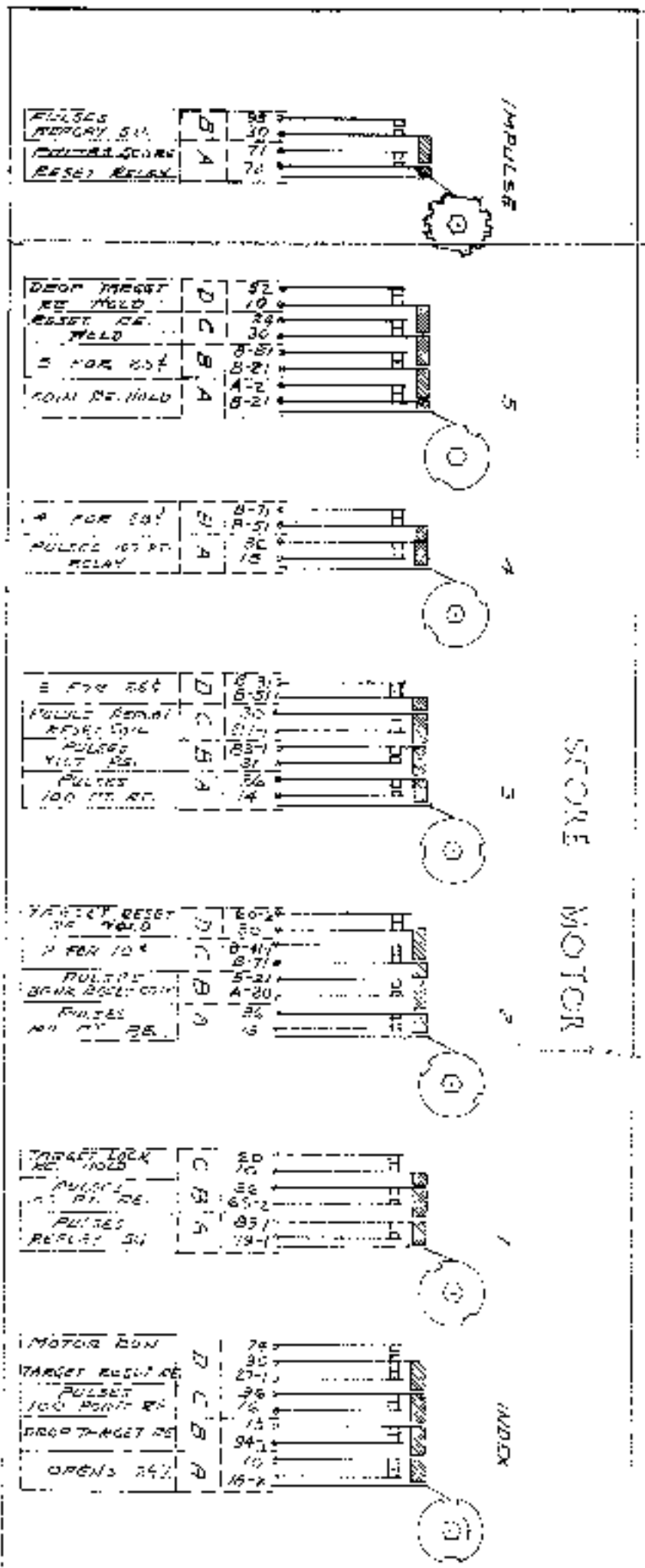
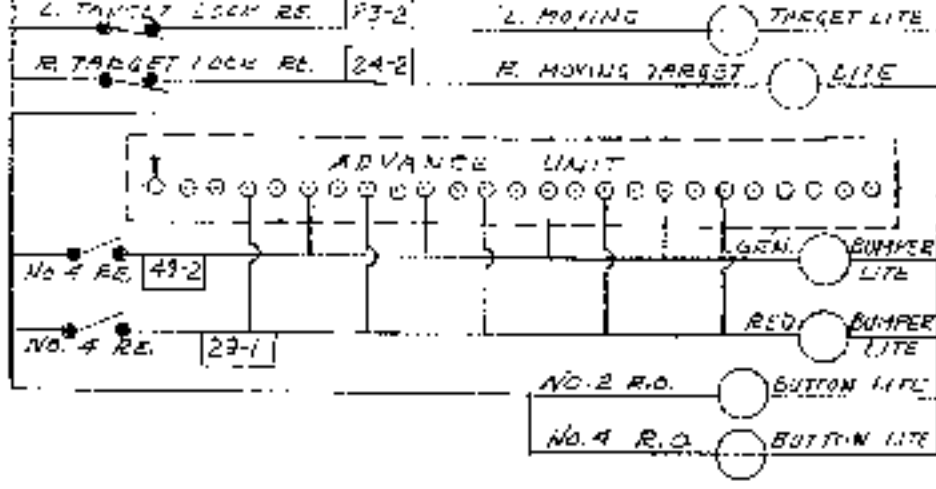
WORD	ABBREVIATIONS
ADV.	ADVANCEMENT
ADV.	ADVANCE
AMP.	AMPLIFIER
BOT.	BOTTOM
BUT.	BUTTON
C.	CAGE
DUAL	DUAL UNIT
END	END OF STROKE
G.O.	GRADE OVER
IMP.	IMPULSE
IND.	INDEX
L.	LEFT
LT	1-775
NO.	NUMBER
O.	OPEN
POS.	POSITION
REL.	RELAY
REV.	REVERSE
RF	RELAY
RT	RIGHT
S.U.	STEP-UP
SW	SWITCH
TABBY	TABBY
T.	TARGET
R.	RIGHT

TOP R. BUMPER COIL	5-17
COUNTER BUMPER COIL	5-17
BOT. L. BUMPER COIL	5-17
BOT. R. BUMPER COIL	5-17
L. KICKER COIL	5-18
R. KICKER COIL	5-18
ADV. S.U. COIL	5-18
R. PUMPING COIL	5-18
L. PUMPING COIL	5-18

HEAT WAVE

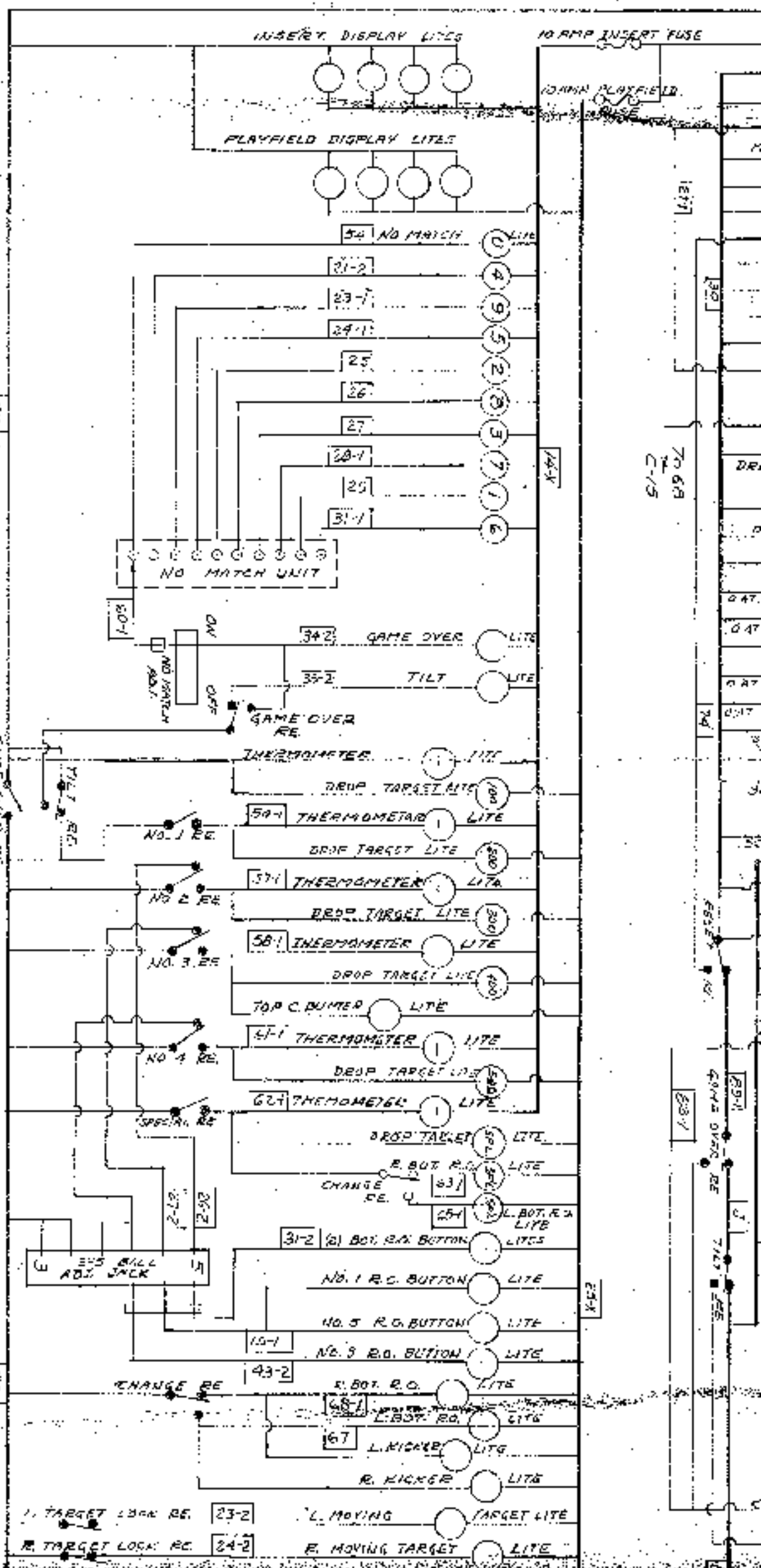
994

5-5-64 W.D.



9
 10
 11
 12
 13
 14

10
 23
 (2)
 45
 45
 23
 24
 L. T.
 R.
 L. T.
 TAY
 R.
 L. P.
 P. R.
 (3)
 C. B.
 No. 3
 10-5
 R. B.
 L. B.



293

HEAT WAVE

