

ALIEN Clear Speaker Panels

Averell's Limited Edition



ALIEN Clear Speaker Panels - Averell's Limited Edition - ENG - Rev: 1.2

Date: 2019-08-10

Dirk Odebrecht

Translation of the original installation instructions

© Copyright by

Dirk Odebrecht

Kiebitzweg 29
47506 Neukirchen-Vluyn
Germany

This document and all attachments are protected by copyright.

Table of Content

List of Figures	4
List of Tables	5
1 Installation Instructions	6
1.1 For your own safety.....	6
1.2 Scope of supply and recommended parts	6
1.3 Getting started	7
1.4 Prepare the new acrylic speaker panels	8
Index	10
Notes	11

List of Figures

Fig. 1: New position of the LED-stripe	7
Fig. 2: Adhesive tape to prevent dazzle.....	8
Fig. 3: Marked position	8
Fig. 4: Use double-sided adhesive tape	9
Fig. 5: Hot glue the grills.....	9
Fig. 6: Mounted acrylic speaker panels	9

List of Tables

Tab. 1: Scope of supply	6
Tab. 2: Recommended parts	6

1 Installation Instructions

1.1 For your own safety



Read the installation instructions!

Before you start please read the complete installation instructions and make sure you understand what to do. You work on your own responsibility and I assume no liability for damage to the device or personal injury!



DANGER

Dangerous electrical voltage!

- First switch off your pinball machine and unplug the power cord from the power supply.



ATTENTION

Possible danger to the pinball machine!

Scratches or glass breakage

- Place a towel or blanket on the playfield glass in front of the backbox area.



ATTENTION

Possible danger to the pinball machine!

Acrylic glass breakage

- Do not drill anything into the acrylic speaker panels as this **will** damage the acrylic speaker panels.
- The mounting with dowels like for the original speaker panels are no longer used with the new acrylic speaker panels.

1.2 Scope of supply and recommended parts

Scope of supply
Installation Instructions by download or e-mail
ALIEN Clear Speaker Panels - Limited Edition

Tab. 1: Scope of supply

Recommended parts
Hot glue gun
Adhesive tape
Double-sided adhesive tape
Tacker and fixing pins/ needles

Tab. 2: Recommended parts

1.3 Getting started

The first improvement is to change the position of the LED-stripe in the backbox. To do this, first remove both speaker panels.

- Open the backbox door.
- Loosen the upper fixing screw of the speaker panels and carefully lift the speaker panels out of the backbox.
- Pull the cables out of the speakers.



ATTENTION

Possible danger to the pinball machine!

Damage of harness or connector

- Don't pull the cable.
- Only pull at the connectors.

- Put the panels to one side.
- Now pull out the fixing pins for the LED-stripe in the area of the speaker panels.
- Then place the LED-stripe further down along the sides and bring the ends together at the bottom and fix the LED-stripe again with fixing pins.



Note

Hot glue doesn't work with the LED-stripe in the backbox.

- Make sure that the LED-stripe has a sufficient strain relief at the connection.

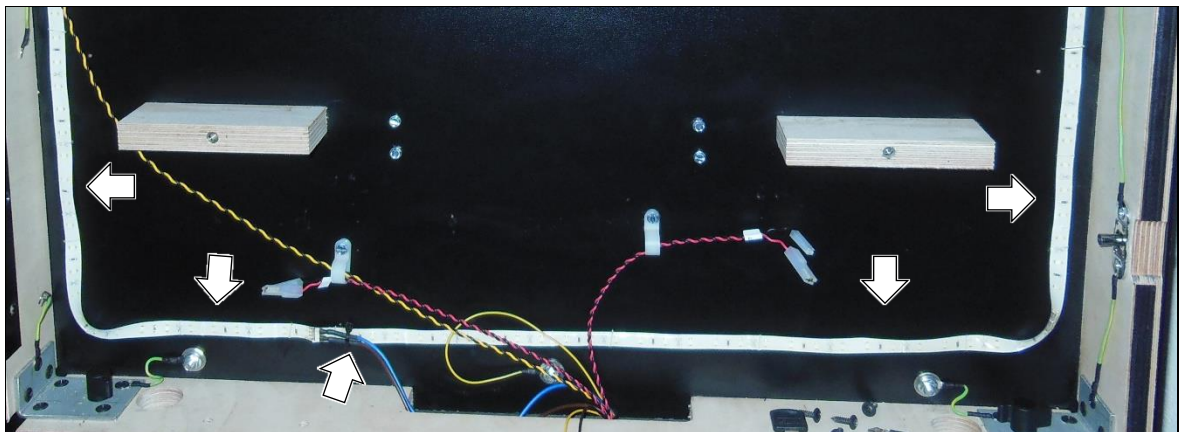


Fig. 1: New position of the LED-stripe

1.4 Prepare the new acrylic speaker panels

- Remove the four mounting screws from the speakers and remember the mounting position.
- Remove the speakers and remove the fixing pins from the grills and remove the grills.
- Now take the new acrylic speaker panels and insert the speakers in the same position. Use the **original** screws and carefully tighten the screws. Turn the screws in and out again and again until the screws can be tightened flush.



ATTENTION

Possible danger to the pinball machine!

Damage of acrylic speaker panels

- Do not overtighten the screws as this **will** damage the acrylic speaker panels or break the screws.
 - Only use the original screws or new screws with the same diameter.
 - Do not drill the existing holes, they are prepared for a perfect fit with the original screws.
-
- Stick some light-impermeable black foil, foam or sticky tape into the curves of the acrylic speaker panels to make sure the light will not disturb during gameplay.



Fig. 2: Adhesive tape to prevent dazzle

- Loosen the screws again so that you can still move the speaker easily in the speaker panel. Insert the new acrylic speaker panels with the speakers into the backbox and tighten the upper fixing screw only slightly so that you can still move the speaker panels sideways.
- Close the backbox door and check the position of the speakers. Correct the speakers in the acrylic speaker panels slightly upwards or downwards and move the acrylic speaker panels to the left or right until the speakers are centered in the translite.
- Open the backbox door and mark the position of the acrylic speaker panels at the bottom with a piece of adhesive tape on the left and right.

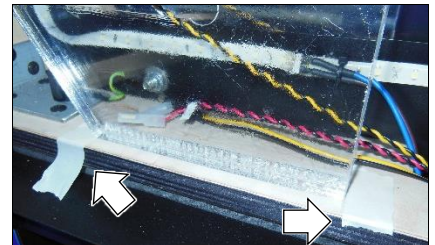


Fig. 3: Marked position

- Remove the speaker panels and fasten the speakers in the acrylic speaker panels.
- Stick double-sided adhesive tape to the bottom of the acrylic speaker panels edges.

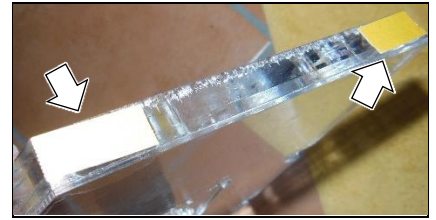


Fig. 4: Use double-sided adhesive tape

**ATTENTION****Possible danger to the pinball machine!**

Damage of acrylic speaker panels

- Do not drill blind holes for the dewels as this **will** damage the acrylic speaker panels.
- Only use double-sided adhesive tape as recommended.

- Glue the grills at the corners to the panels with a little hot glue.
- If necessary, repaint the grills before gluing.

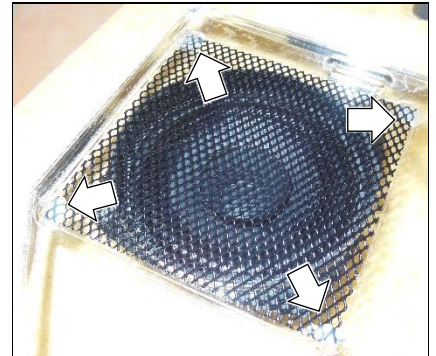


Fig. 5: Hot glue the grills

- Clamp the speaker cables and return the acrylic speaker panels to their marked positions. Make sure that the acrylic speaker panel is straight and press the acrylic speaker panels into the double-sided adhesive tape.
- Tighten the acrylic speaker panels mounting screws.
- Remove all used tools.
- Clean the backbox and close the backbox door.
- Replug the power cord and switch on the pinball machine.



Fig. 6: Mounted acrylic speaker panels

Enjoy!

Index

A		
Acrylic glass breakage.....	6	
D		
Disturbing light.....	8	
P		
Playfield glass breakage.....	6	
Position.....	7, 8	
Power cord	6	
Power supply	6	
R		
Repaint.....	9	
Responsibility.....	6	
S		
Screws	8	
Strain relief.....	7	
T		
Translite	8	
U		
Understanding.....	6	

