

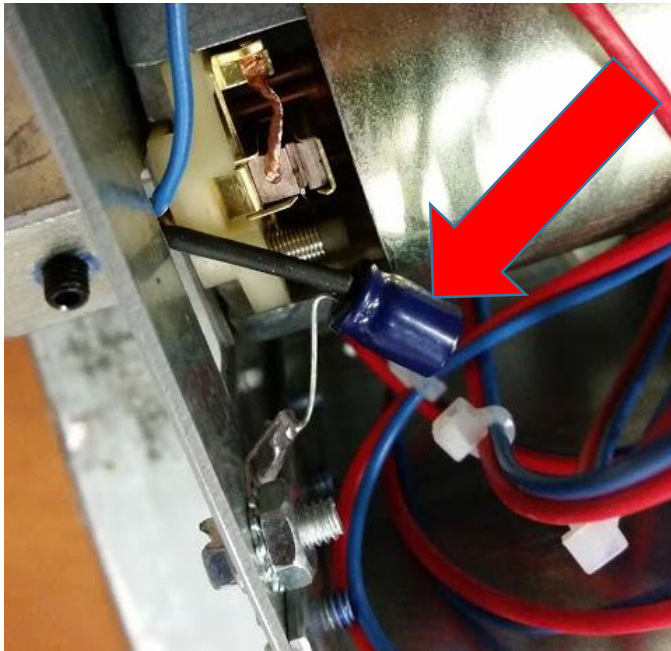
Pinball Life SPIKE Shaker Motor High Priority Service Bulletin

Due to a few issues reported when using the Pinball Life Shaker Motors with the new Stern SPIKE system, we have issued a high priority service bulletin that needs to be performed prior to installation of the shaker motor in WWE, and Kiss.

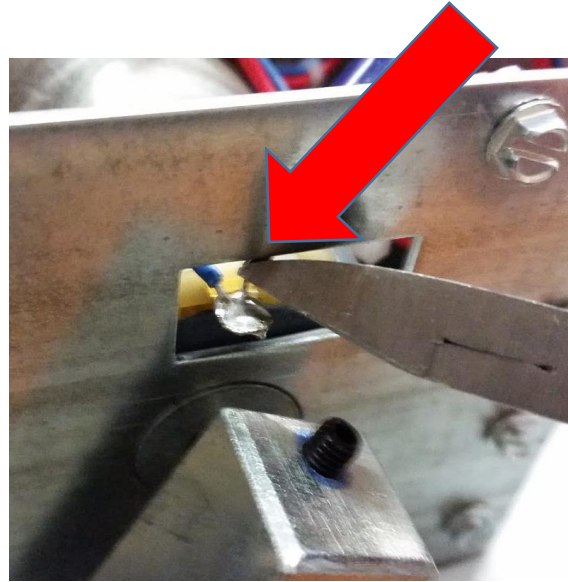
Issue: There is a capacitor that is hooked up on the motor that was used to solve certain grounding issues on Stern SAM system games. This capacitor is causing the coin door interface board to fail when used.

Solution: The capacitor on the motor will need to be clipped off from the assembly. In order to prevent damage to your machine, please follow the steps below BEFORE installing your shaker motor in your game.

Step 1: Locate the blue capacitor on the side of the shaker motor.



Step 2: Completely clip off the capacitor at its base on both sides to remove it from the motor assembly. Do not clip the blue wire on accident.



Step 3: Install in your machine and enjoy!

IMPORTANT NOTE: If you have already installed your shaker motor and are now experiencing issues with your machine, please contact scott@pinballlife.com or call us at (847) 515-3415