

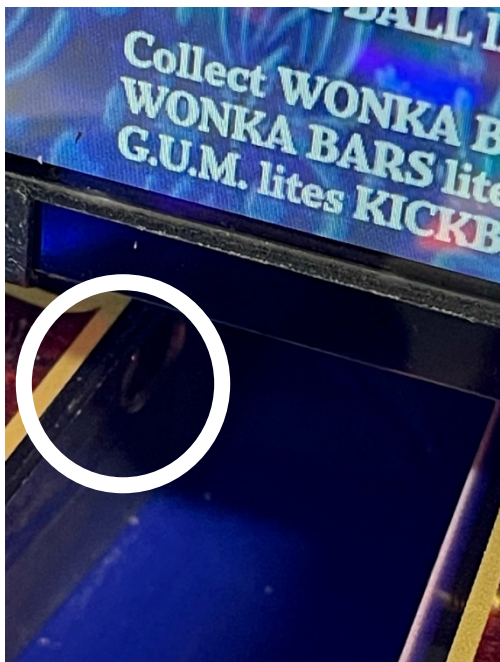
# CENTER LOOP SWITCH #76

## NOT REGISTERING OR “STUCK OPEN”

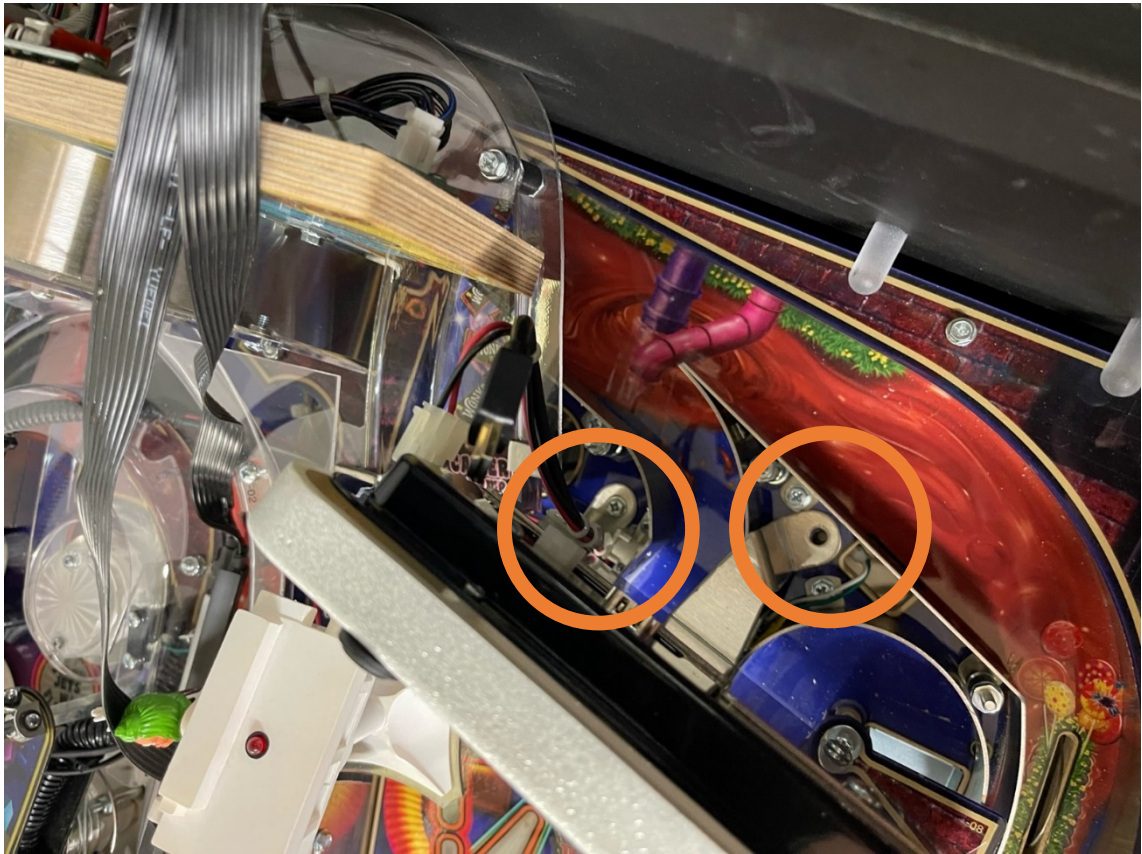
1. Center Loop Switch #76 not registering (yellow arrow); Order part #PN 99-050013-00 (Playfield Opto Pair Assembly) from Jersey Jack



2. Two optical sensors are located behind metal ball guides (white circles)



3. Remove two plastics underneath Wonkavision and set aside
4. Unclip pin connector and HDMI cables from back of screen
5. Unscrew mounting bracket screws for Wonkavision (orange circles);

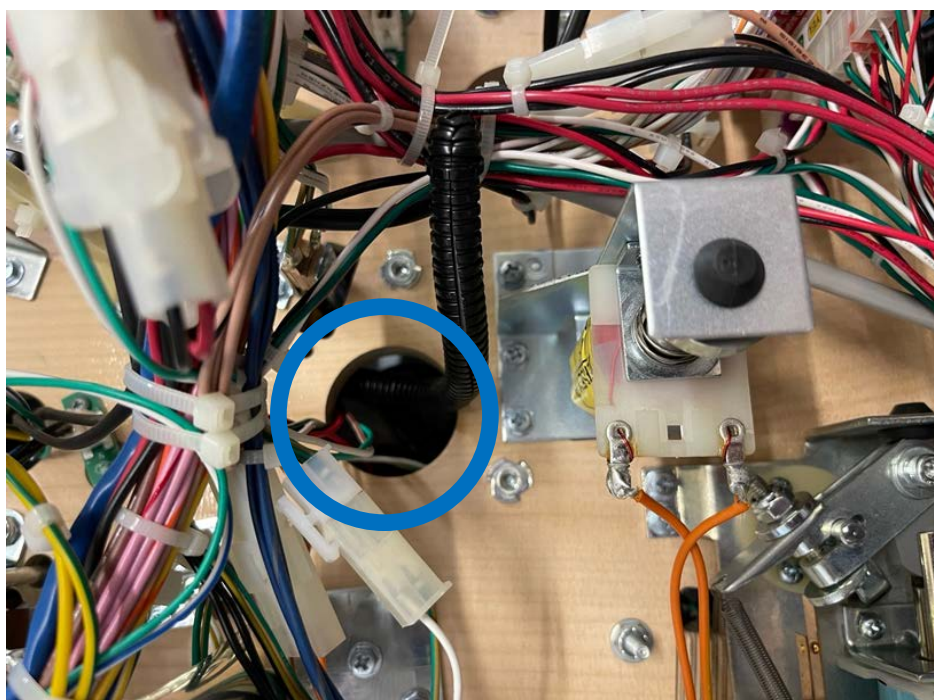


6. Set Wonkavision aside

7. Unscrew left and right optical sensor mounts (green rectangles)

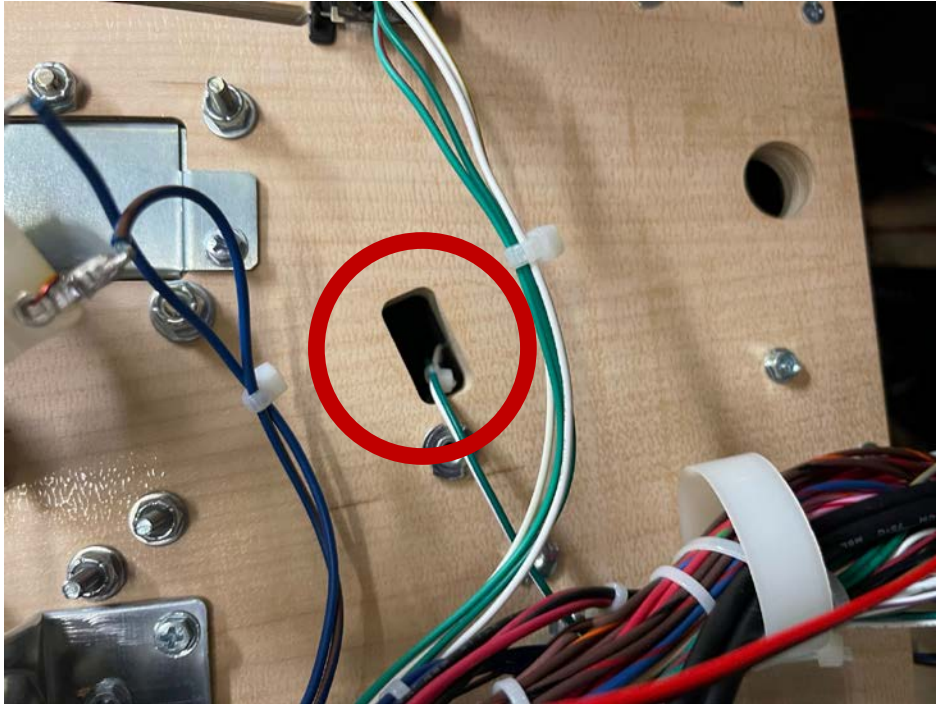


8. Feed topside left sensor through hole (blue circle)

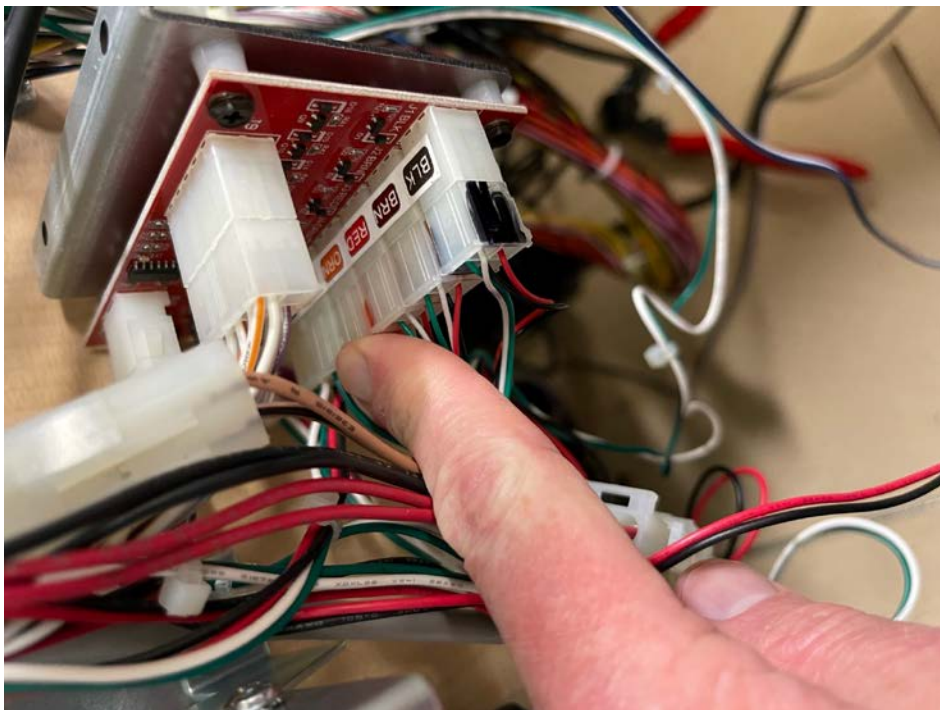


9. Carefully unclip zip ties to free wires

10. Feed topside right sensor through hole (red circle); Unscrew wire clamp securing wire bundle and cut zip ties as necessary



11. Trace wires from sensors back to four-pin connector marked "orange" and remove old sensor assembly



12. Plug in new opto assembly and reverse steps above.

NOTE: BE CAREFUL WHEN FEEDING AND RE-MOUNTING TOPSIDE RIGHT OPTO SENSOR – THE MOUNTING SPACE IS VERY NARROW AND YOU MIGHT DAMAGE THE SENSOR IF YOU FORCE IT. IF THE SENSOR PROTRUDES TOO FAR FROM THE MOUNTING BRACKET, USE THE OTHER SENSOR IN THIS LOCATION (THEY ARE INTERCHANGABLE!)