

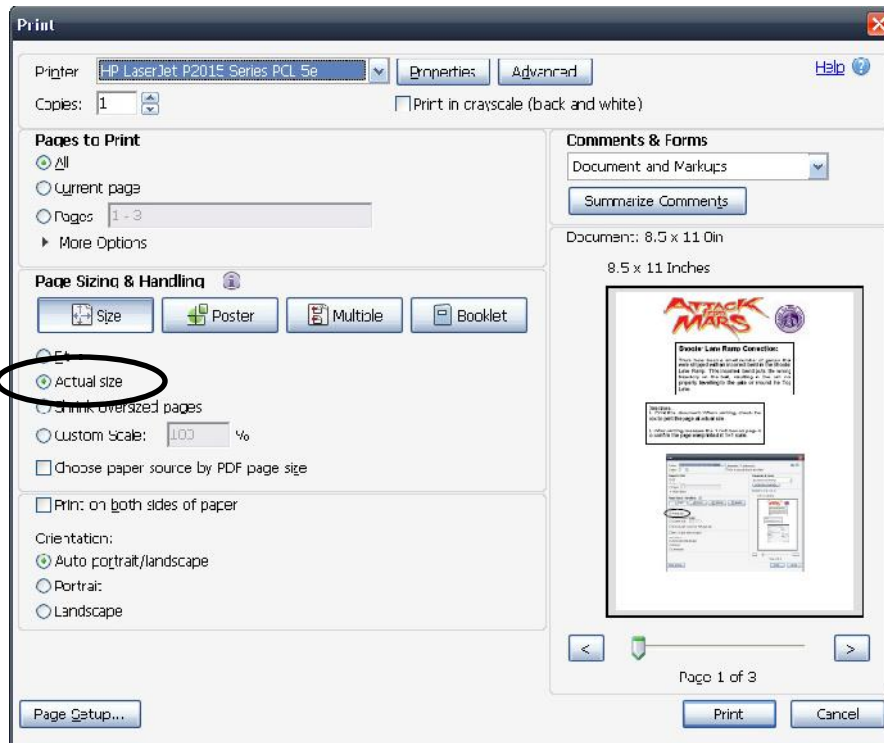


Shooter Lane Ramp Correction:

There have been a small number of games that were shipped with an incorrect bend in the Shooter Lane Ramp. This incorrect bend puts the wrong trajectory on the ball, resulting in the ball not properly travelling to the gate or around the Top Lane.

Directions.

1. Print this document. When printing, check the box to print the page at actual size.
2. After printing, measure the 1 inch box on page 4 to confirm the page was printed at 1=1 scale.



3. Remove the two screws that hold the Shooter Lane Ramp to the playfield. You can remove the Shooter Lane Ramp without removing the wire ramp above it.

4. Place the Shooter Lane Ramp on the edge of a table, as shown below. Align the Shooter Lane Ramp so the bend in the bracket is sitting right on the corner of the table.

5. Bend your Shooter Lane Ramp slightly down so the angle of the bend matches the image on the page 4. The metal will bend easily, so it does not take much force to make the very small change to the bend that is needed.

5. Reinstall the Shooter Lane Ramp, sliding the tab on the ramp back underneath the ball guide that you pulled it out from and securing with the two screws.



6. Before installing glass back on to the game, test the shooter lane to make sure the ball is traveling up to the gate with every shot.

7. Set the Auto Plunger strength back to default in the CGC System Menu.



Kicker Bracket Alignment Correction:

If the Kicker Bracket Assembly is not aligned correctly, it can hit the ball off center and cause it to rattle in the shooter lane.

Check that the plunger is aligned to the center of the ball.



If the Kicker Bracket Assembly is not aligned to the center of the ball, loosen the nut and two screws. Twist the assembly so that the armature is set to the center of the ball, and re-tighten the nut and screws.



1 = 1 Ramp Check Sheet

Bend

