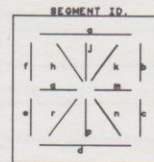
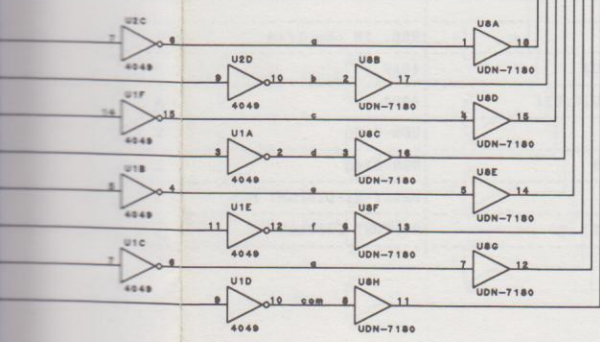
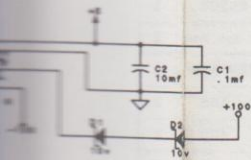
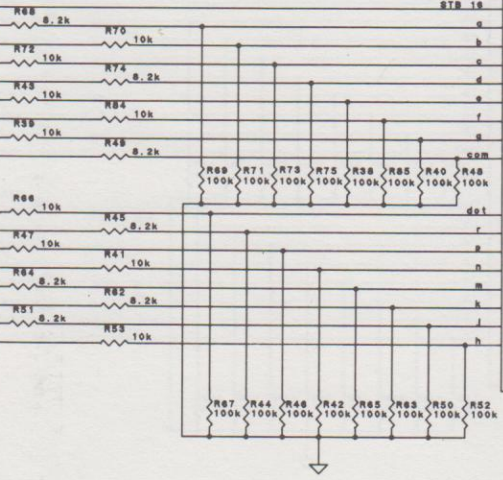
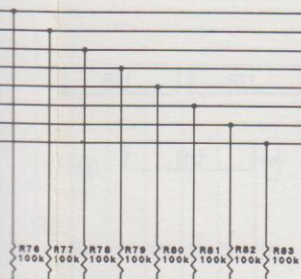


Bally Left Display Schematic

STB 1	85, 87
STB 2	78, 81
STB 3	75, 77
STB 4	69, 71
STB 5	63, 65
STB 6	57, 61
STB 7	53, 55
STB 8	47, 49
STB 9	41, 43
STB 10	37, 39
STB 11	31, 33
STB 12	25, 27
STB 13	19, 21
STB 14	15, 17
STB 15	11, 13
STB 16	5, 7
a	2
b	4
c	12
d	18
e	24
f	30
g	36
h	42
i	48
j	54
k	60
l	66
m	72
n	78
o	84
p	90
q	96
r	102
s	108
t	114
u	120
v	126
w	132
x	138
y	144
z	150



POWER PIN CONNECTION OF IC'S			
UDN-6118	+100V	PIN 10	
	GND	PIN 9	
UDN-7180	-100V	PIN 10	
	GND	PIN 9	
4001	+5	PIN 14	
	GND	PIN 7	
4049	+5	PIN 14	
	GND	PIN 7	

THE INFO CONTAINED ON THIS DRAWING IS CONFIDENTIAL PROPERTY OF WILLIAMS ELECTRONICS GAMES, INC., IT MAY NOT BE USED OR DISCLOSED TO OTHERS WITHOUT WILLIAMS PERMISSION.

REV	DESCRIPTION OF CHANGE	ECN NO.	DATE	CHECKED BY	DATE	APPROVED BY	DATE	SHY--1. OF --1--	PART NUMBER	REV
1	N.P.R. 5-1-89	21130	5-1-89	J. Boydston	5-1-89				BALLY L-DISPLAY	
									16-8089	

3-14 Left Display Schem