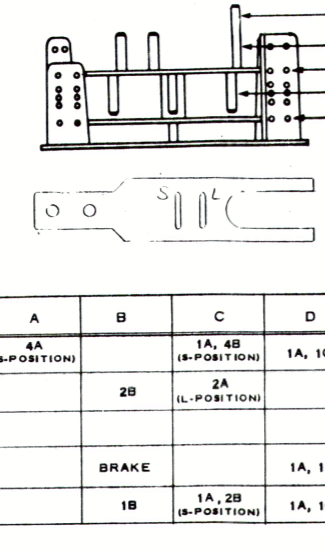
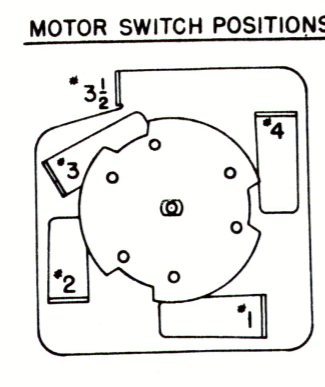
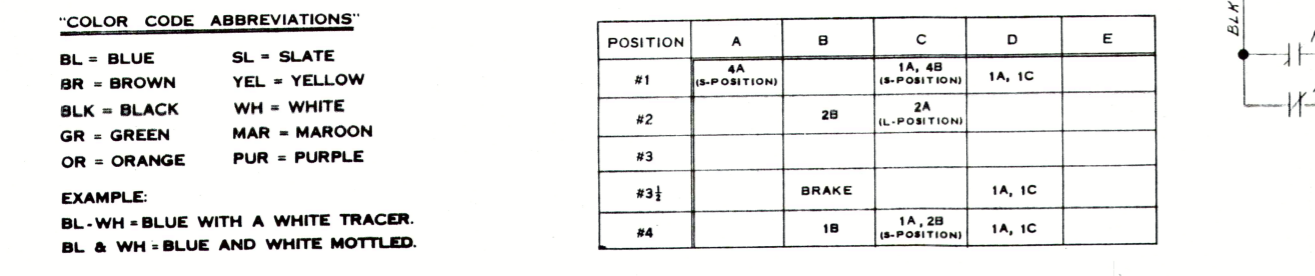
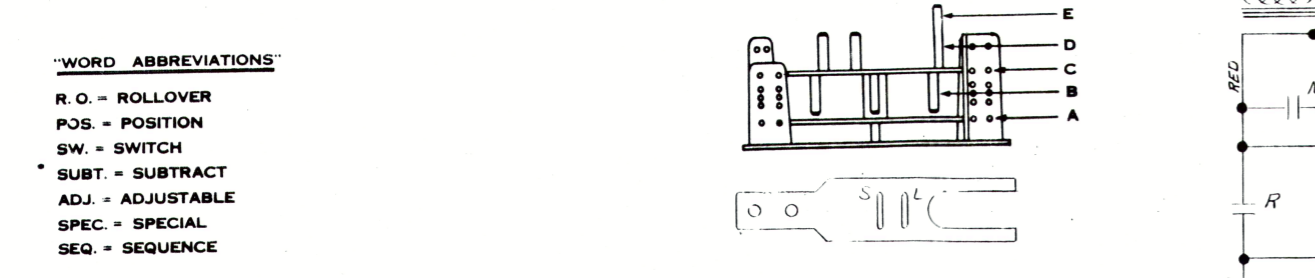
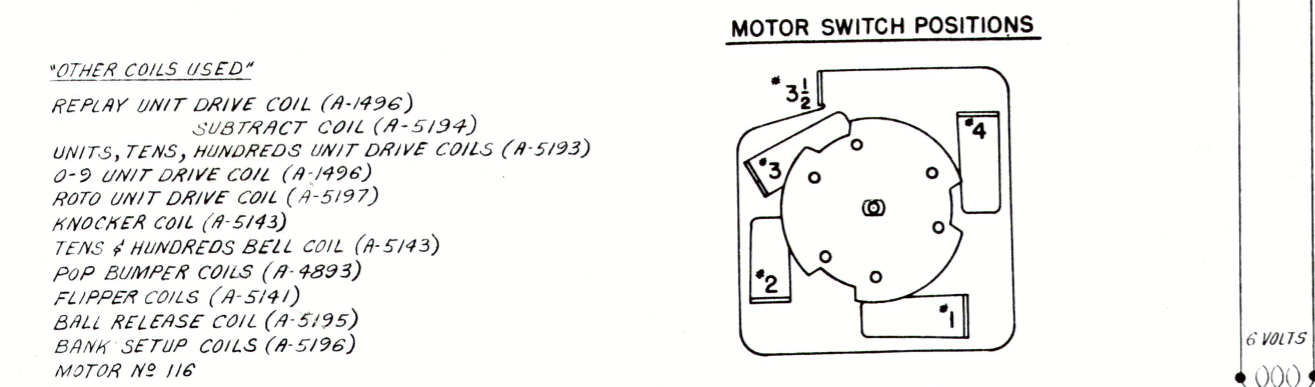


**"RELAYS"**

INDEX	NO	COIL	TYPE	CONTACTS	USE
2E	A	R20-4	"AG"	4A	BLUE POP BUMPER RELAY
2E	B	R20-4	"AG"	4A	RED POP BUMPER RELAY
3E	C	R20-4	"AG"	4A	WHITE POP BUMPER RELAY
4E	F	R20-5	MAG.	2A	ROLLOVER BUTTON CONTROL RELAY
6E	G	R20-4	MAG.	5A,1B	SPIN RELAY
7E	M	R20-4	"AG"	4A,1B	10 POINT RELAY
7E	N	R20-4	"AG"	4A,1B	1 POINT RELAY
3E	O	R20-4	MAG.	4A	MATCH RELAY
5E	P	R20-2	"AG"	1A	SERIES RELAY
6E	Q	R20-4	"AG"	5A	100 POINT RELAY
12E	R	A-3438	MAG.	1A	HOLD RELAY
13E	W	A-5294	"AG"	4A,2B	EXTRA CHUTE RELAY

**"BANK"**

INDEX	NO	COIL	CONTACTS	USE
3E	H	A-1118	2A,1B	THOUSAND LIGHT RELAY
3E	Z	A-1118	2B,1C	SEQUENCE REPLAY RELAY
3E	V	A-1118	3A,1B	SEQUENCE RELAY
11E	DB	A-1118	5B,1C	RESET RELAY
8E	X	A-1118	1A,1B	GAME OVER RELAY
11E	T	A-1118	2C	TILT RELAY
5E	4	A-1119	2A,1C	NUMBER 4 RELAY
13E	S	A-1856	2A,2C	START RELAY
5E	3	A-1119	2A,1C	NUMBER 3 RELAY
5E	2	A-1119	2A,1C	NUMBER 2 RELAY
5E	1	A-1119	2A,1C	NUMBER 1 RELAY
5E	10	A-1119	2A,1C	NUMBER 10 RELAY
5E	9	A-1119	2A,1C	NUMBER 9 RELAY
5E	8	A-1119	2A,1C	NUMBER 8 RELAY
5E	7	A-1119	2A,1C	NUMBER 7 RELAY
5E	6	A-1119	2A,1C	NUMBER 6 RELAY
5E	5	A-1119	2A,1C	NUMBER 5 RELAY



**OPERATOR PLEASE NOTE:**  
THE PURPOSE OF ALL THE ADJUSTMENTS ON THIS GAME ARE TWOFOLD: FIRST THAT THE PLAYER RECEIVES THE PROPER AMOUNT OF AMUSEMENT FOR THE COIN INSERTED, AND SECOND THAT THE OPERATOR RECEIVES A FAIR RETURN ON HIS INVESTMENT.

**CORRAL**

Reproduced under license from  
Gottlieb Development LLC  
P.O. Box 889, Palham, NY 10893 USA,  
owner of the  
CORRAL and D. Gottlieb & Co.®  
trademarks and related copyrights, by  
Steve Young, The Pinball Resource,  
3 Commerce Street,  
Poughkeepsie, NY 12603 USA.  
No further reproduction permitted.

**D. Gottlieb & Co.**  
1140-50 NORTH KOSTNER AVE.  
CHICAGO 31, ILL.