

CzTV Installation Instructions for Twilight Zone

This mod is already fully assembled. You may want to make sure all cables and USB drives did not shift during shipping and are fully seated.

Tools required:

- Phillips screwdriver

What is included:

- TV (fully assembled)
- Mounting bracket w/ installation screw
- Power cable (stern plug to micro USB)
- Power tap (WPC to stern plug)
- Raspberry Pi
- Ribbon cable connecting the Raspberry Pi to the TV
- 8GB SD card holding the operating system (DO NOT REMOVE)
- 16GB USB drive holding the video files



Step 1:

- a) Turn off the pinball machine and unplug the power cable from the wall.
- b) Remove the playfield glass and backglass.
- c) Pull the playfield up and out towards you so it rests on the front and you can access the back of the playfield.



Step 2:

- a) Line up the TV along the back of the pinball machine to your liking.
- b) I prefer to place the mounting bracket about 1 foot from the left side.
- c) Screw the mounting bracket into the top of the backboard.



Step 3:

- a) Make sure the Raspberry Pi is behind the backboard. The ribbon cable gets draped over the backboard.



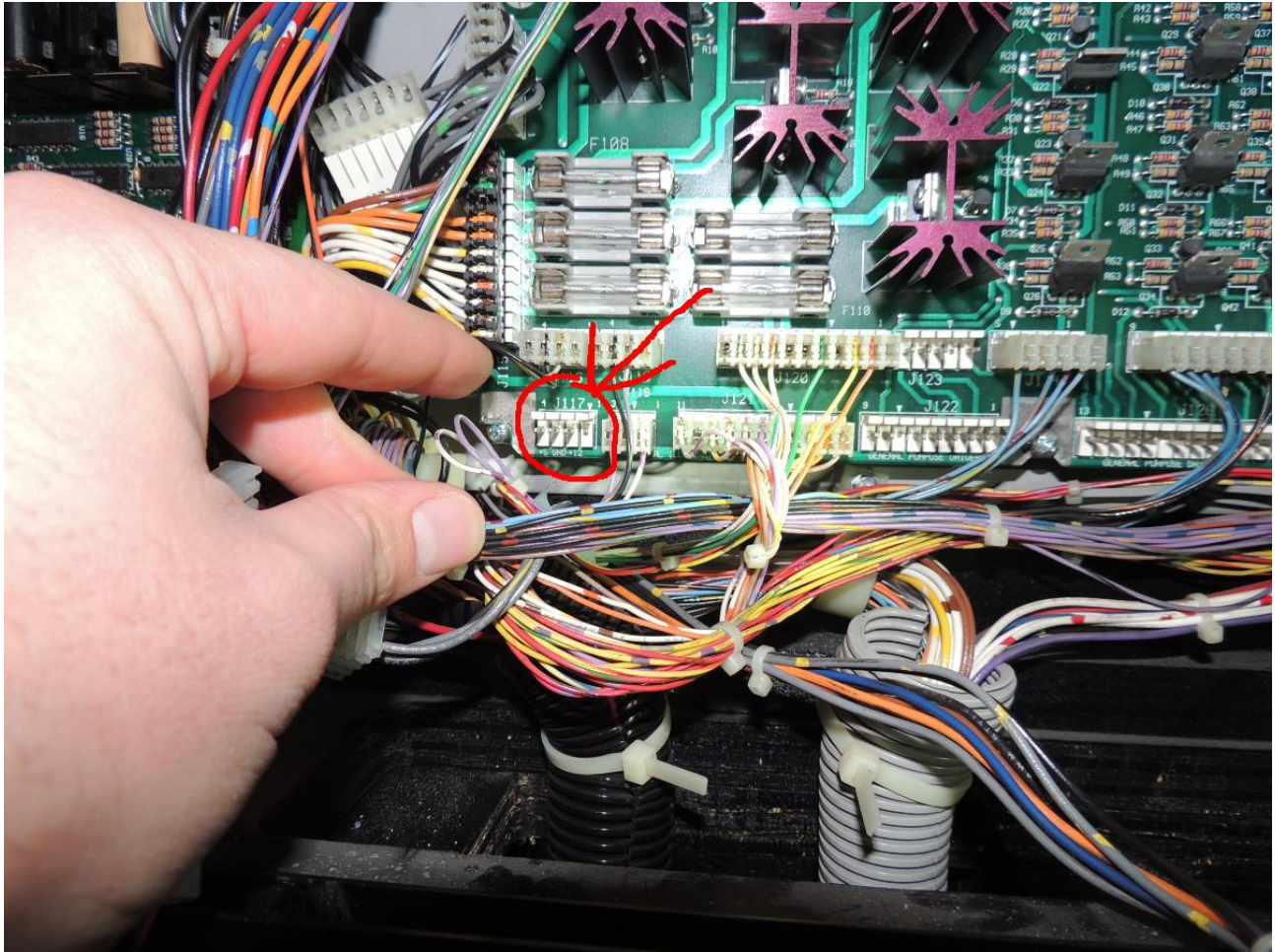
Step 4:

- a) Attached is a picture of the power cable and power tap.
- b) The micro USB end should already be attached to the Raspberry Pi.
- c) The power tap will need to be attached to the driver board in the backbox.
- d) Run the power cable from the Raspberry Pi into the backbox by pushing the cable up through the backbox cable hole.



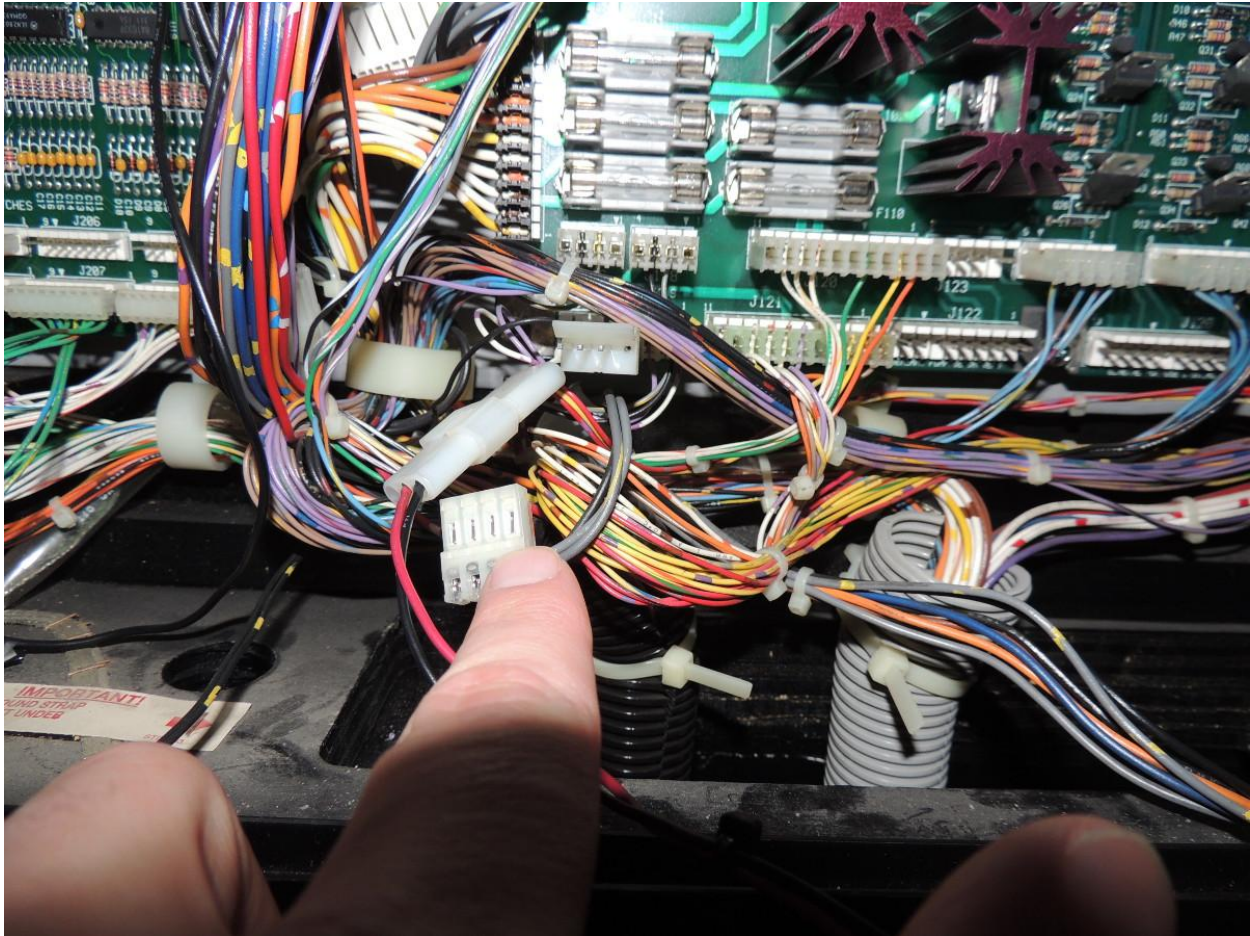
Step 5:

- a) Remove the speaker panel on the backbox.
- b) Locate connector J117 on the bottom-left of the driver board.
- c) Remove the connector plugged in here



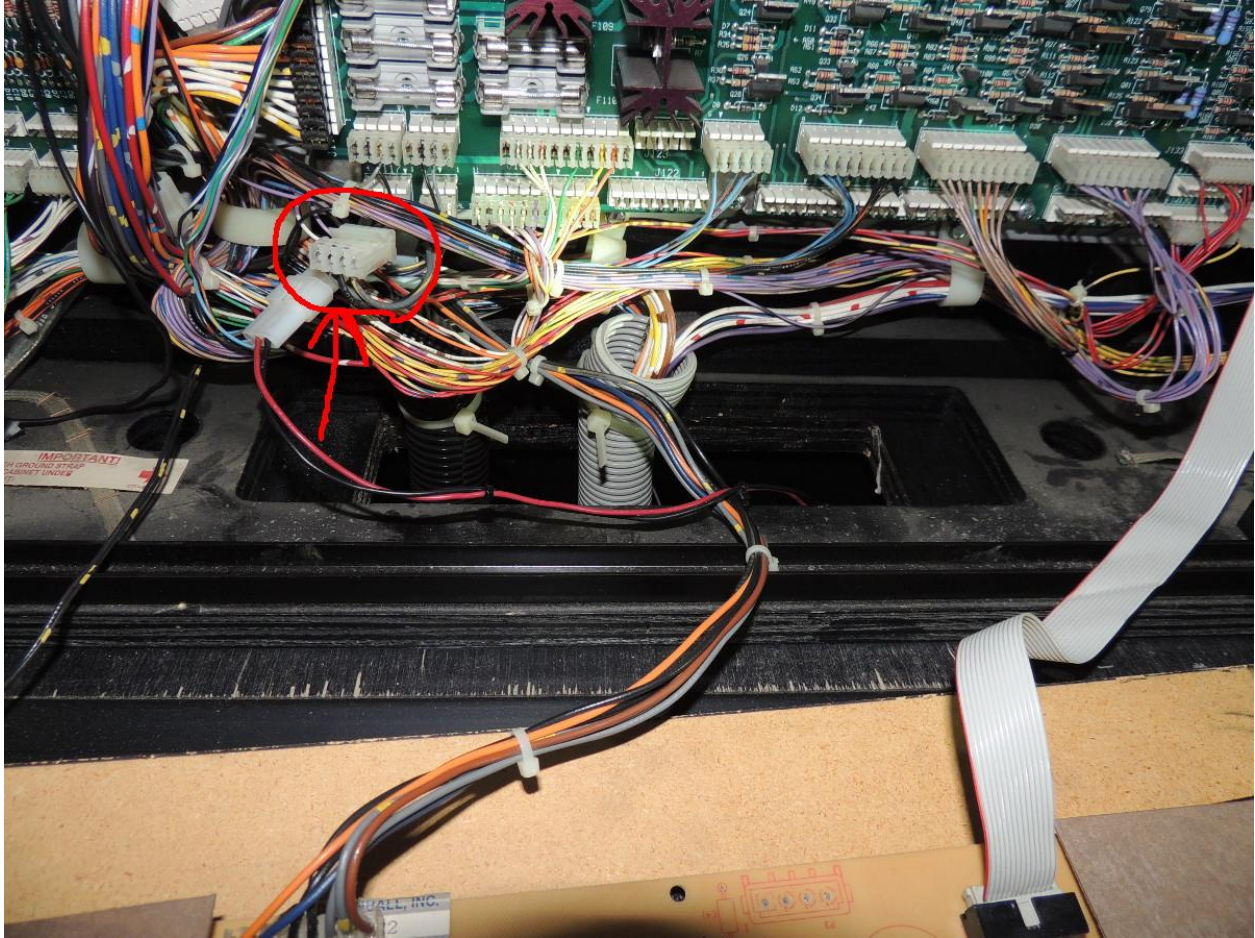
Step 6:

- a) Plug the female end of the included power tap into the J117 header on the driver board.
- b) The power tap connector **SHOULD** only fit in one orientation; however make sure the 3 wires on the connector match the 3 pins on the driver board.



Step 7:

- a) Plug the original connector into the male end of the power tap.
- b) Again, it should only attach in one orientation; but make sure the 3 wires match the location of the pins.



Step 8:

- a) Replace the speaker panel and turn on the pinball machine and test to make sure the Raspberry Pi boots up and displays an image.
- b) If there is an error message on the screen, please email support at ipcstudiosllc@gmail.com for assistance.

