

Requirements: A PC/laptop and about 15GB of space free to store the drive image.

Download and install HDD Raw Copy Tool from here: <https://hddguru.com/software/HDD-Raw-Copy-Tool/>

Use the Windows Installer with the default settings.

Remove the solid state drive from the Big Lebowski (see the Technical support TBL FAQ for help with that) and connect it to your PC. The most convenient way is through a SATA to USB adapter cable like this:

https://www.amazon.com/UGREEN-Cable-Adapter-Converter-Support/dp/B00MYU0EAU/ref=sr_1_9?crid=3DUDMXRRIL369&keywords=sata+to+usb&qid=1652811533&srefix=sata+to+usb%2Caps%2C74&sr=8-9

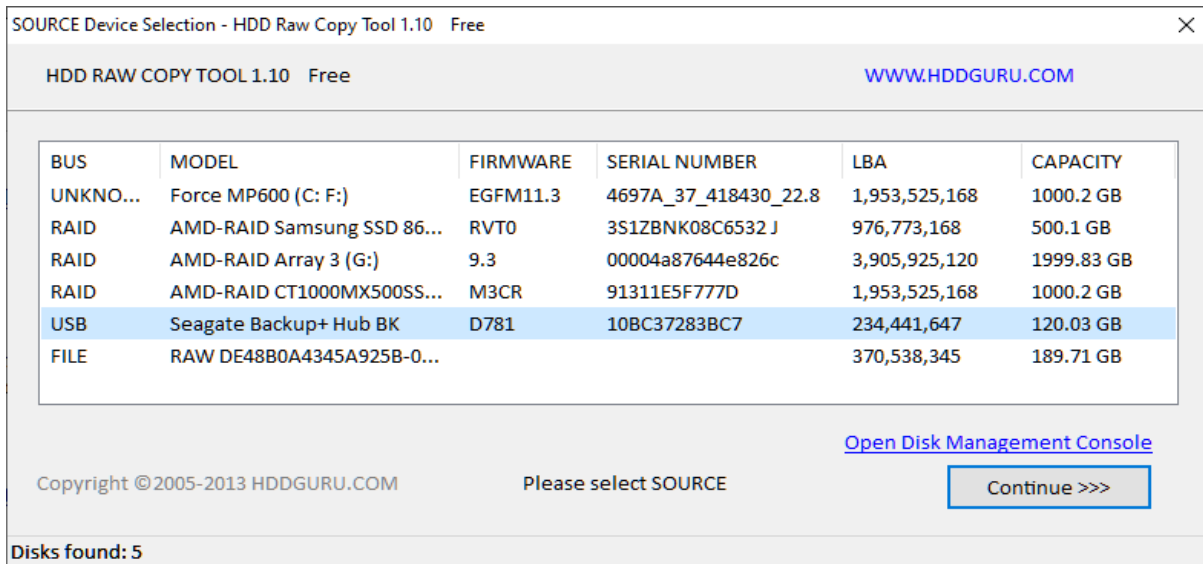


A USB dock that supports both 3.5 HDDs and 2.5 SDDs like this can also be used:

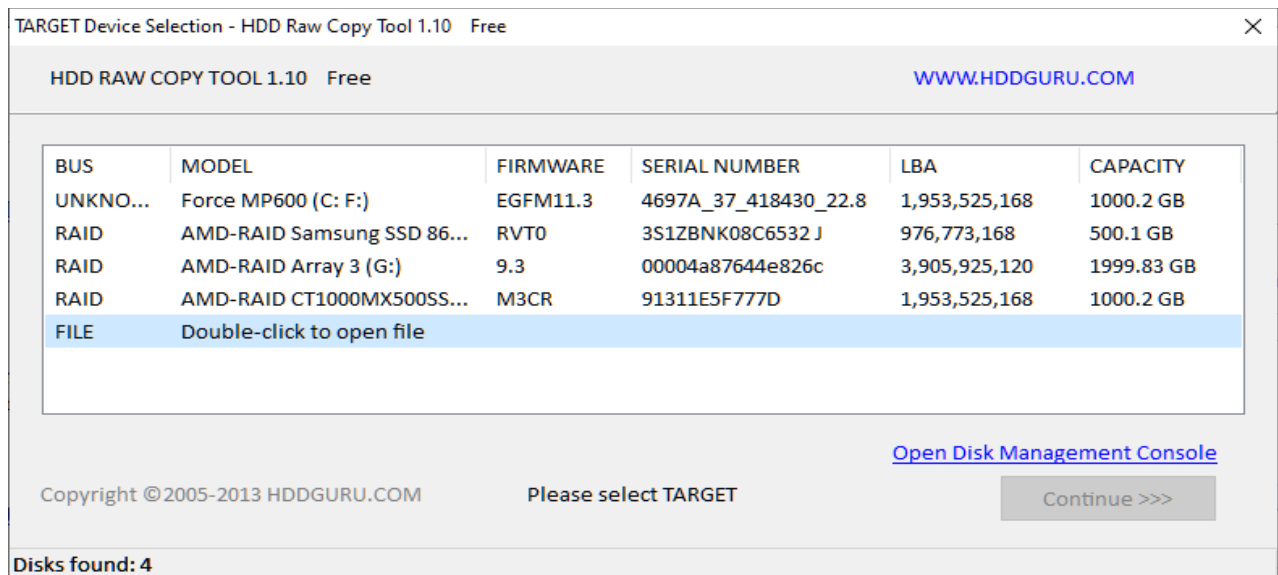


Or if you could just connect the drive internally if you know what you're doing.

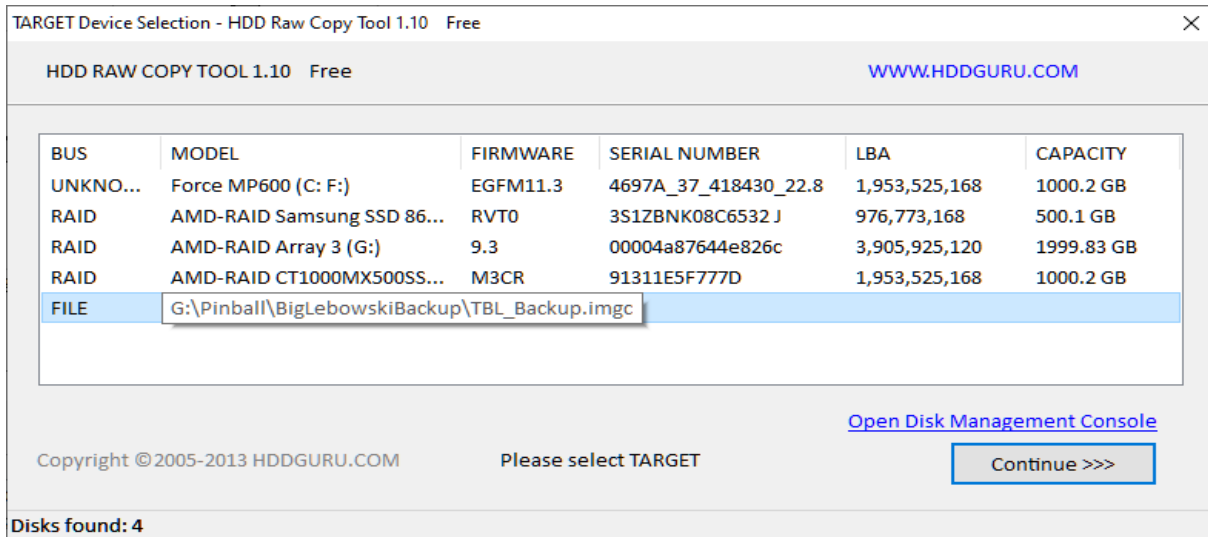
Once the drive is connected to your PC/laptop, run HDD Raw Copy Tool. Select the USB item that matches the TBL drive and click the Continue button



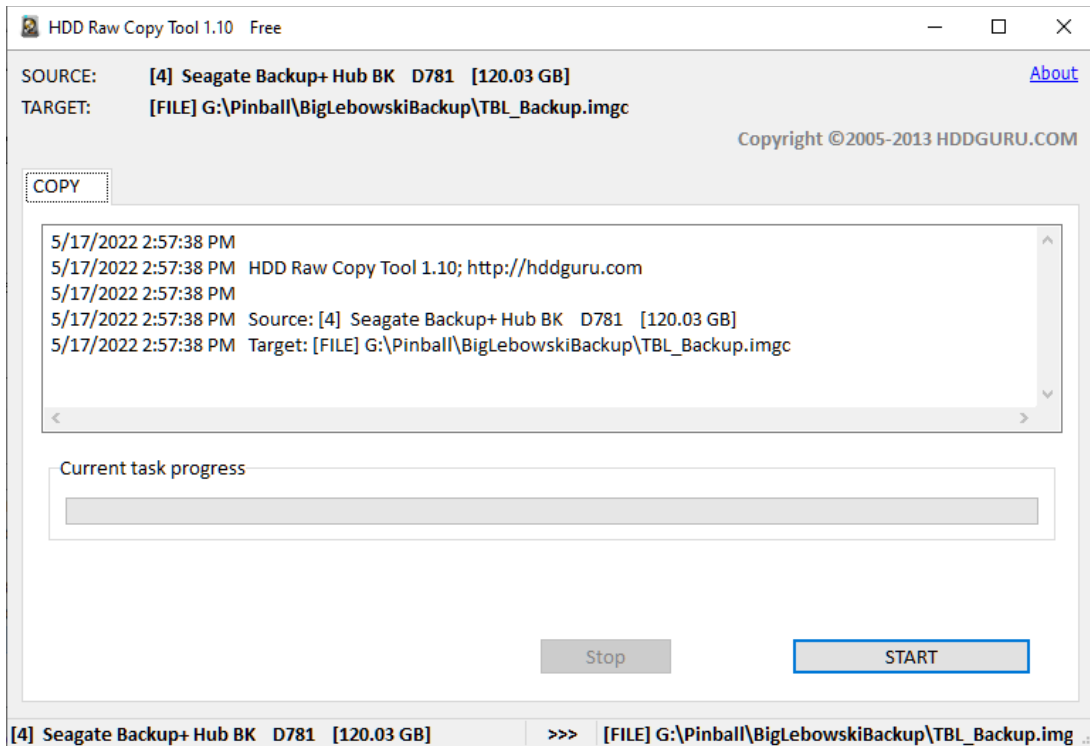
Double-click on FILE - “Double-click to open file” (DO NOT use anything else for the Target device), select a location to save the image, give it a name like “TBL_Backup”, and hit save.



Push the Continue button making sure FILE is still selected.



Push the Start button. Note the source is the TBL drive and the target is the file you selected on your PC.



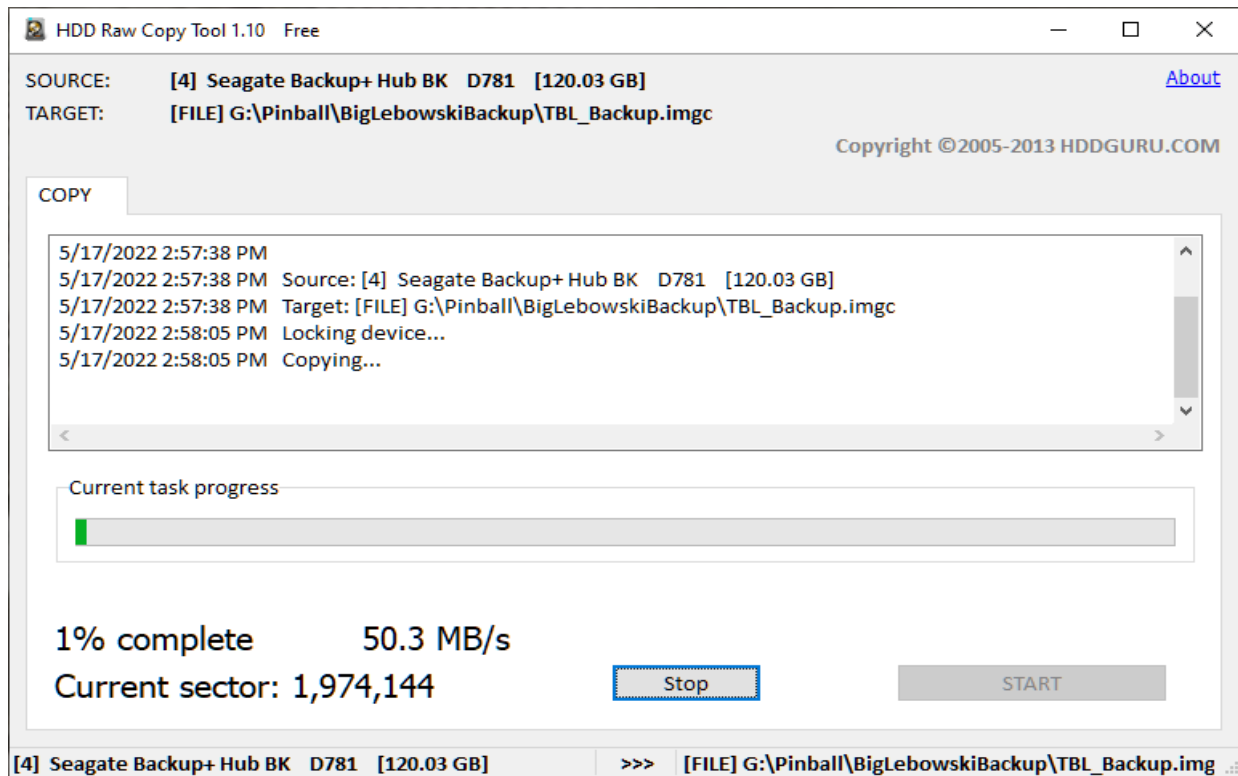
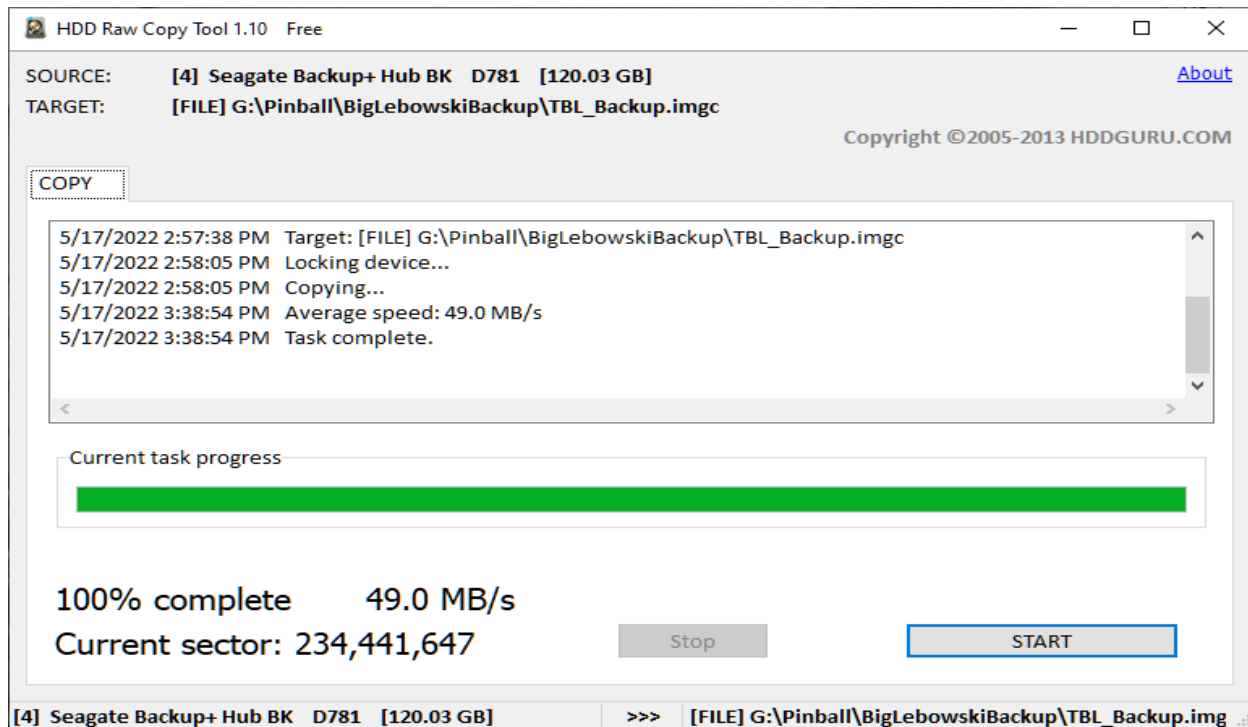
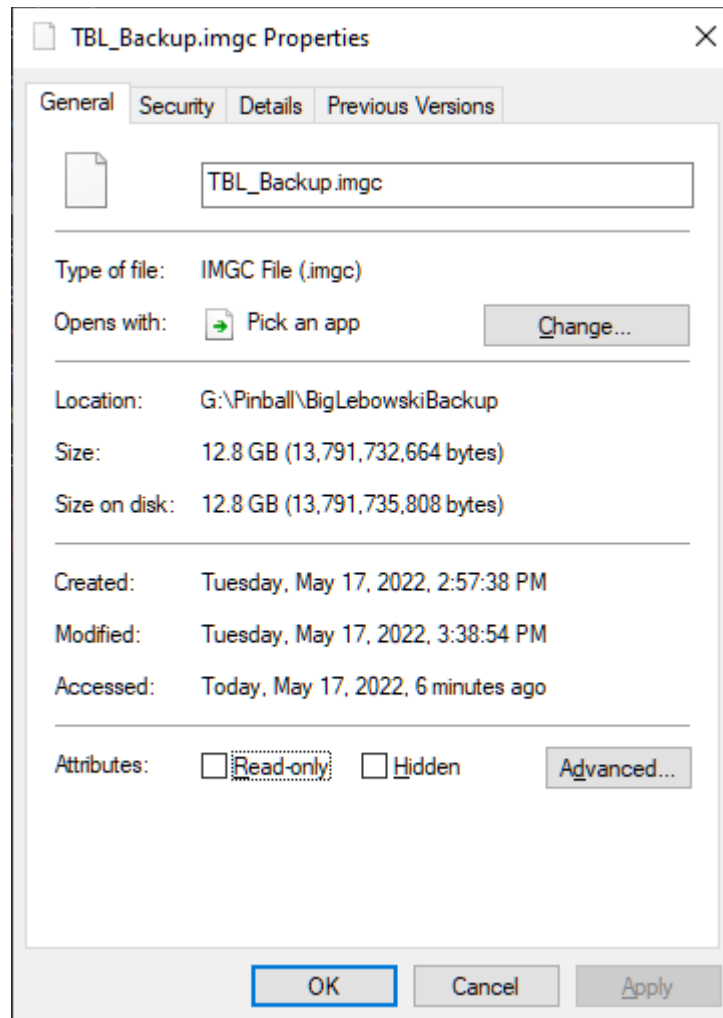


Image creation complete.





The image can be restored to a different disk by reversing the process with a different target drive connected to the USB adapter.